

Stainless Steel DAW Series



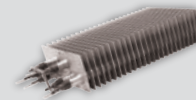
Pic-A-Watt
Steel Fin Element



Model Code:

DAW	12	15	-SS
A	B	C	D

A: Series
 B: Volts: 12=120V 20=208V
 24=240V 27=277V
 C: Watts (250 - 2250)
 D: Stainless Steel



Pic-A-Watt



- Select from up to 7 wattages with switch on grill
- Pic-A-Watt® Element
- 304 Stainless Steel Enclosure
- C-Frame Motor
- Squirrel Cage Blower
- Whisper Quiet
- Green pilot light indicates heat is on
- 20 gauge clear powder-coated grill
- Multiple wattage selection
- Flange-mount wall can
- Smart Limit Protection®
- 1-Pole or 2-Pole unit mount thermostat 45° - 80°F
- 120, 208, or 240 Volts



The Stainless Steel DAW Series

A heater unique to King featuring the ability to choose the wattage needed. A heavy-duty industrial switch mounted on the grill allows quick and easy choice of up to 7 different heat settings. Use where higher wattage is not required during unoccupied periods. Typical installations are toll booths, motor home/RVs, pleasure craft and cabins. By providing air movement and dry heat, musty, moldy odors are reduced and interior fabric life is maximized. Utilizing a lower wattage provides winter freeze protection with the bonus of energy savings. During RV use the heater load (Amperage) can be adjusted to the receptacle or cord size. This prevents damage to plugs and receptacles due to overloading. During lay-up periods, wattage can be adjusted to the correct level. Quiet operating tangential cylindrical (squirrel cage) blower and commercial grade element make the Dial-A-Watt™ the heater of choice for people on the move.

Ordering Information

MODEL	UPC	VOLTS	WATTS	AMPS	SHIP WEIGHT lbs
DAW1215-SS	19251	120	250•500•750•1000•1250•1500	2.1-12.5	9
DAW2022-SS	19208	208	500•750•1000•1250•1500•1750•2250	2.4-10.8	9
DAW2422-SS	19252	240	500•750•1000•1250•1500•1750•2250	2.1-9.4	9

Refer to Stainless Steel PAW Series for dimensions and accessories

Engineering Specifications

Contractor shall supply and install, DAW Stainless Steel Series wallmounted forced-air electric heaters manufactured by King Electrical Mfg. Company, of the wattage and voltage as indicated on the plans.

Ratings: Heaters shall be available in wattages of 250 to 2,250 at 120, 208, or 240 Volts.

Blower and Motor: A tangential cylindrical blower, delivering 65 CFM, shall be driven by a shaded pole, permanently lubricated, C-frame type motor with impedance protection and sealed bearings. Motors shall be the same voltage as the heater.

Elements: Element assemblies shall consist of steel sheathed heating tubes in a furnace brazed, plate-finned, block design. Each sheathed tube shall contain coiled a Ni-Chrome wire embedded in an insulator of Magnesium Oxide.

Thermal Overload: Heaters shall be equipped with thermal overload Smart Limit Protection®, which disconnects elements and motor in the event normal operating temperatures are exceeded. If thermal overload trips due to abnormal operating temperatures, thermal overload shall

remain open until manually reset by turning the heater off for fifteen minutes. Automatic reset of thermal overloads, which allow the element to continue to cycle under abnormal conditions, will not be accepted.

Wall Can: The wall can shall be stainless steel and shall contain a minimum of three (3) knockouts. The wall can shall have a depth gauge or flange mount, and a factory installed Copper groundwire. Minimum 4" clearance to floors and 6" to sidewalls. Zero clearance to combustibles in the wall.

Grill: 304 brushed stainless steel, clear powder coating.

Selector Switch: Shall provide up to 7 wattage settings adjustable from switch on front of heater.

Indicator: Light designates heater is operating.

Approval: Heaters shall be listed and approved by Underwriters Laboratories or equal.